

Symposium One Health

19 octobre 2018

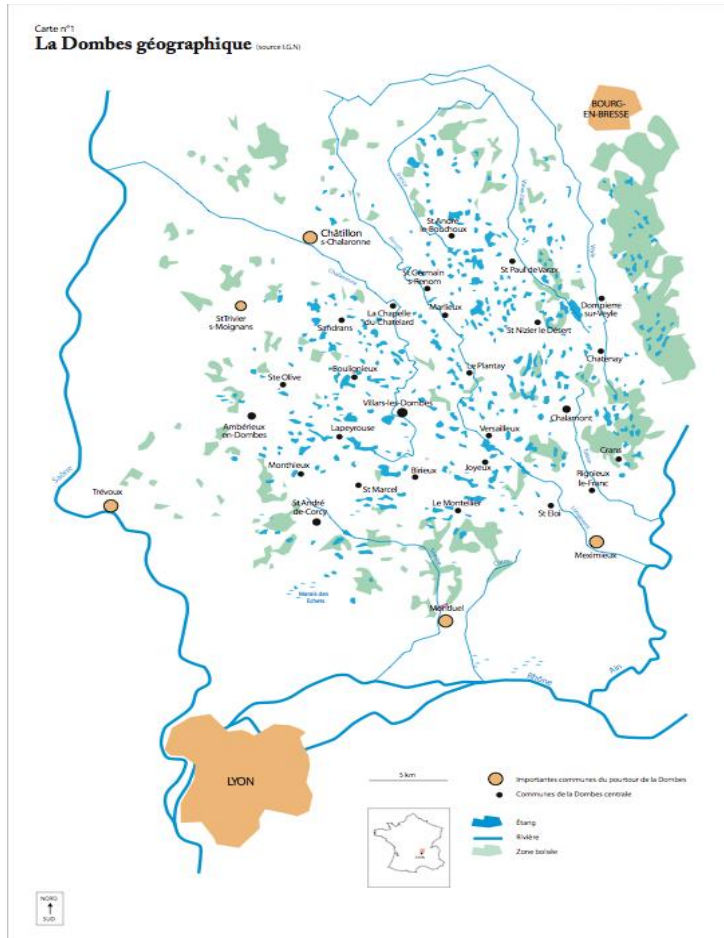
Muséum National d'Histoire Naturelle

*Crises sanitaires et mise à l'épreuve des
relations entre hommes et animaux*

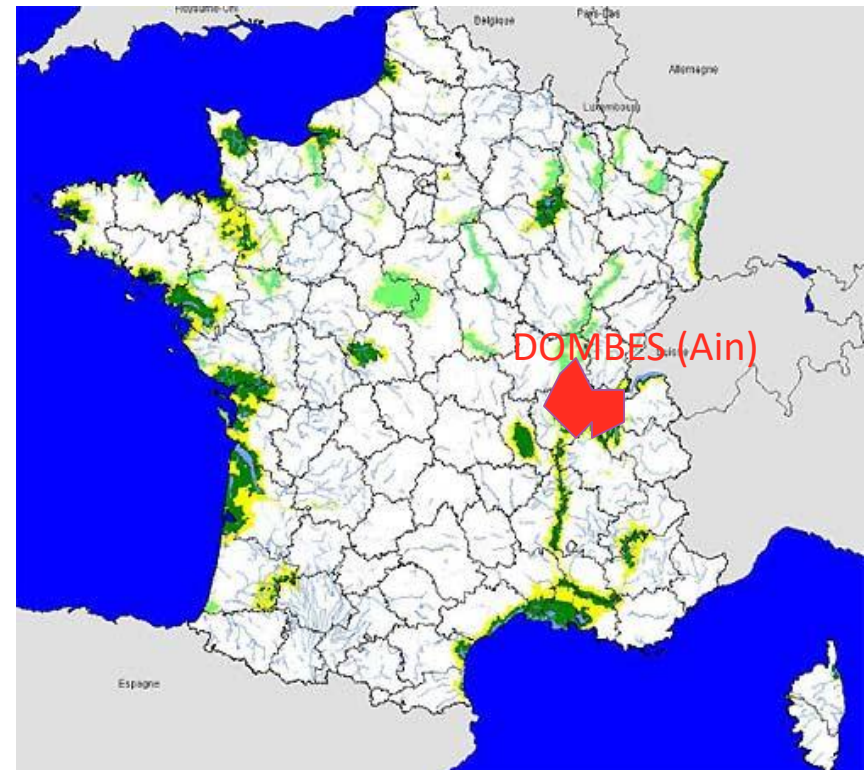
Vanessa Manceron

CNRS/LESC

French Wetland hitten by Bird flu in February 2006 (La Dombes)



La Dombes (1500 ponds = 10 000 ha)



Wetlands location (in green)

Countryside economy : livestock and poultry farming, fish farming, Waterfowl shooting, tourism



Bird flu outbreak : Local consequences (February to July 2006)

- 150 factory farms = fall of 20% in turnover / 139 slaughterings to get compensation
- 590 farmyards confined = production stopped, with no resumption for a part of breeding.
- 1200 fish farming ponds : prohibited acces = fall of 20% in turnover
- Waterfowl Shooting : fall of 40% hiring incomes.
- Tourism : Fall of 30% (accomodation, restaurant) ; Ornithological Park closed

Health Zoning : Protection and Security.

Area under surveillance



Criticism of Health Zoning from Countryside point of view



1- Plan's biological rationality :

- Human and animal bodies at the same level, as potential recipients and transmitters
- Notion of Individual erased
= Dehumanized, as person and Human being

2- Ambivalence of zoning : engangered area (to be protected) or dangerous area (to be controlled)?

- Wetlands identified as risk areas
- Exogenous forms of Stigmatization
- Devaluated status :
« infected »/« infectuous »

3- Difference in the management of farm animals and wild animals

- Sick swans flying freely / Healthy chickens confined and slauthtered
- Reversed hierarchy of human interests

Virus coming from Swans : Rural perceptions

Analogy between Disease, Wilderness and Foreign born animals



- Source of Disease ascribed to wild and foreign born animals, considered as pests
- Explanatory principle : Disturbance in local ecology associated with the political injunction to protect biodiversity and with the Proliferation of wilderness without anthropic control.
- The virus makes sense in a specific referential system (local and historical), mobilizes cognitive categories and actualizes socio-environmental problems in force within contemporary rural societies.
- The virus is identified the farthest away from countryside interests and local identity (holding off harm). The ideas operate by reordering of the local cognitive categories.
- The perception of disease is closely interlinked with the types of relationships established with the environment, with non humans and with humans (and to the distance at which they are held).
- Economy of suspicion and resentment : the health logic deprived of the farmer's means of action (competence, knowledge).

Virus coming from Factory farming : Environmentalist perceptions

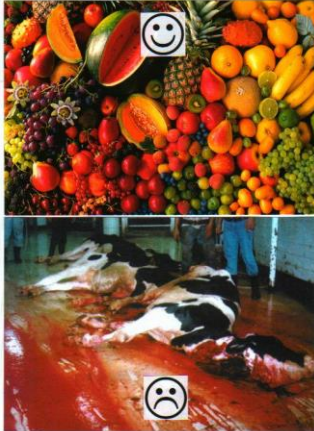
Analogy between Disease, Capitalism and Artificial animals



- Viral source ascribed to factory chickens : hyper-domesticated and artefact-animals.
- Explanatory principle : The naturalist topic associates Disease with artificialization of living organisms. The natural order had been broken by technology. The scorned naturality of animals retorts like a boomerang in the form of an uncontrollable virus load.
- Criticism of Confinement policy advocated by health authorities : justification of industrial condition on the basis of hygienist arguments, at the expense of more natural small scale farming, being unfairly sacrificed.
- The viral threat justifies the need to restore the boundary between nature and artifice and promote a less intrusive relationship with animals to solve the problem resulting from breaking this principle.

Virus coming from Human cruelty : Animalism perceptions Analogy between Disease, Exploitation and Sentient animals

Végétarien !



- Viral source ascribed to human practices (farming for food, violence of the domesticizing relationship).
- Explanatory principle : Living conditions of farming animals cause atrophies, mutilations and many visible symptoms of disease. Bird flu constitute one of the foreseeable avatar of the dreadfulness of farming.
- Reformist groups defined the event as an human-centered phobia that unnecessary increase animal suffering (irrational fears that led to abandon pets, to get rid of pigeons, to exploit protected species, to justify massive slaughterings).
- Radical groups asserted bird flu in the form of salutary apocalypse : H5N1 weakened the farming system, led to bann the use of wild duck for shooting, instigated the closing-down of parks an bird markets...
- The virus deviates from any biological referent to reach the status of moral agent.

Conclusion

	Ruralism	Environmentalism	Animalism
Viral source	Wild and foreign born animals (unfamiliar)	Factory farming animals (artefact)	Captive animals (sentient, suffering)
Referential system	Allochtonus/local Wild/domesticated	Natural/ Artificial	Cruelty/pity
Disorder	<ul style="list-style-type: none"> • Disorder within the environment • Environmental conflict 	<ul style="list-style-type: none"> • Disorder within the farms • Technical and economical controversy 	<ul style="list-style-type: none"> • Disorder within the human exploitation of animals • Moral debate
Human otherness	Environmentalists	Factory system	Farming (for food)
Criticisms against Health crisis management	<ul style="list-style-type: none"> • Territorial takeover • Privation : means of action and know-how • Stigmatization • Reversed hierarchy of interests (chickens/swans ; human/nature) 	<ul style="list-style-type: none"> • Confinement policy promotes factory farming • Small scale farming, environment and food quality sacrificed • Reversed hierarchy of interests (natural chickens/artificial chickens) 	<ul style="list-style-type: none"> • Paroxysmal phobia : increase animal suffering and death • Reckless management in Asia • Salutary Apocalypse :farming system in crisis